

BRITT FESTIVAL LIGHTING SYSTEM

Console: GrandMA3

Dimming: ETC 60 x 2.4 Dimmer Rack - 30 D20 MODULES - 60 DIMMERS

Trussing:

1st Electric

- 6" from DS edge
- 20.5" x 40' Tomcat Box Truss (black)
- 10 - Ellipsoidals
- 30 All par 64 1K mediums
- 3 Pro-can 4-lites top hung
- Trim height 22'
- Left and Right Points
- See Plot for Instrument Schedule

2nd Electric

- 10' 4" from DS edge
- 12" x 40' Tomcat Box Truss (Black)
- 4 Elation Da Vinci
- 24 All par 64 1K mediums
- Trim Height 18'
- Left, Right and Center Points
- See Plot for Instrument Schedule

3rd Electric

- 19' 8" from DS edge
- 12" x 40' Tomcat Box Truss (Black)
- 4 Elation Da Vinci
- 24 All par 64 1K mediums Trim Height 15'3"
- Left, Right and Center Points
- See Plot for Instrument Schedule

4th Electric

- 30' 1" from DS edge
- 12" x 40' Tomcat Box Truss (Black)
- 8 Elation Rayzor760
- Trim Height 10'10"
- Left, Right and Center Points
- See Plot for Instrument Schedule

Fixtures: Please refer to lighting plot. Please advance with Id for specific rig.

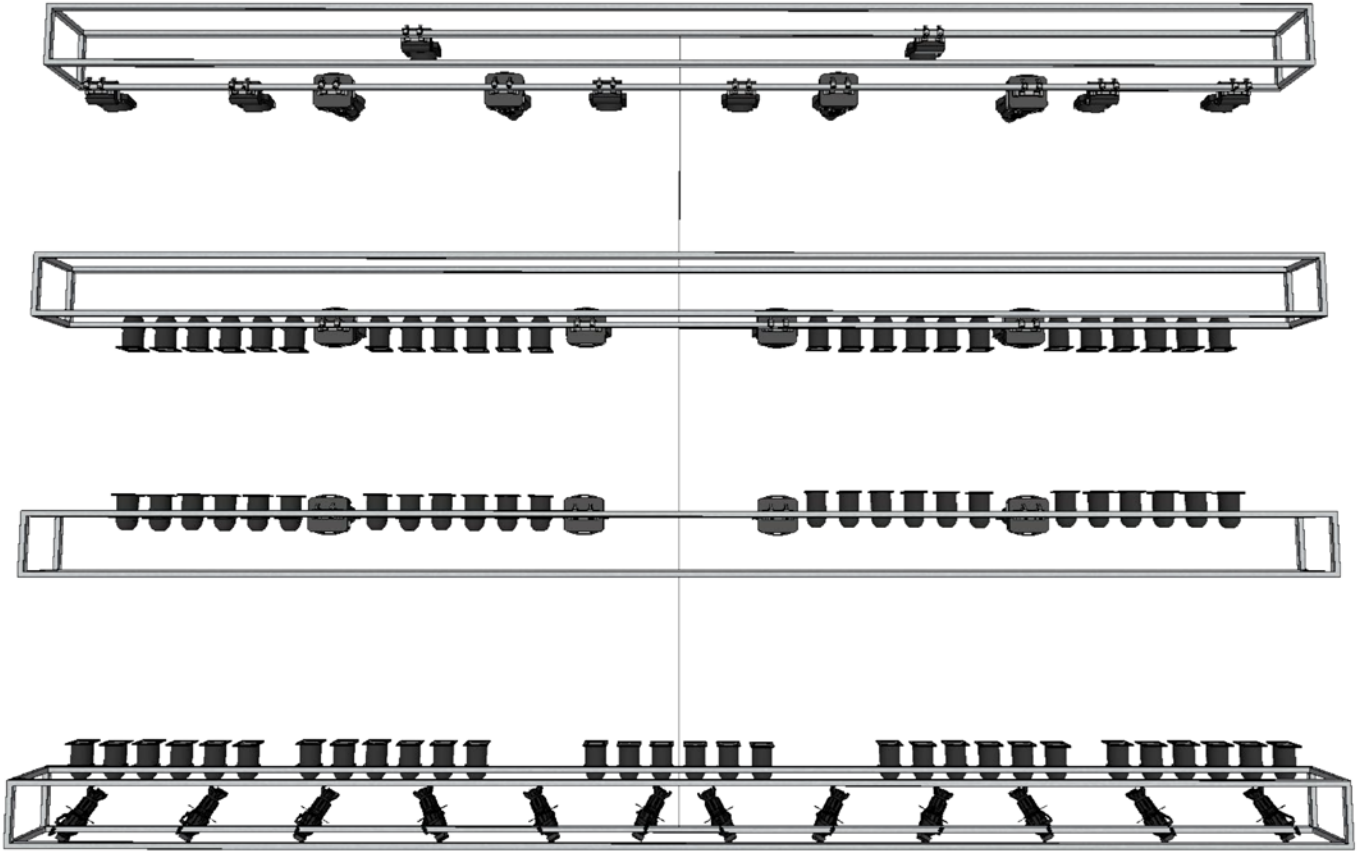
Followspots: (2) altman voyager 400w hti followspots

Lighting Designer

Malachi Carlson

541.601.6675

malachi541@gmail.com



BRITT FESTIVAL HOUSE LIGHT PLOT

Lighting Designer
Malachi Carlson
541.601.6675
malachi541@gmail.com

DOWN STAGE TRUSS	ID NUMBER	QUANTITY	CH MODE
DIMMER	1.1-1.18	18	
SPECIALS	1.43-1.55	12	
MOLES	1.56-1.58	3	
MID STAGE TRUSS 1			
DIMMER	1.19 - 1.30	12	
Artiste DaVinci	1.100 - 1.220	4	40 Channel
Mid Stage Truss 2			
Dimmer	1.31 - 1.42	12	
Artiste DaVinci	1.260 - 1.380	4	40 Channel
UP STAGE TRUSS			
Rayzor 760	2.1-2.365	8	52 Channel

Lighting Designer
 Malachi Carlson
 541.601.6675
 malachi541@gmail.com