



Peter Britt Festivals Audio Specification 2023

Audio Contractor – George Relles Sound, Inc. EST 1975

Contact: George Relles
Ph/Fx – 541.686.9325
Mobile –541.915.7230
E-mail –grelles@msn.com

FOH Console:

AVID S6L-32D, E6-144 , digital console V7.1 (or current update), Waves WSG-HD SoundGrid Option, 2)AVB cards
AVID AAX, Eleven, McDSP, Oxford Live, Waves Mercury, Phoenix, Empirical Labs Arouser plug in bundles, Madi -192 Option Card, 1HDX
Pro Tools 12.7, MacBook Pro OS 10.12.3, 8GB Ram, 2.7 Ghz Intel Core i5
LOCAL RACK: AVID E6-144, Lexicon PCM96 Surround, Eventide Eclipse, Waves Server 1, Tascam SS CDR200, UPS
AVID STAGE 64 Fiber Optic/ 64 mic in/ 24 line /8 AES out/ UPS
 (*) Avalon VT 737, Summit DCL200, GML 2020 Upon Request
 (*) Solid State Logic LIVE. L-550Plus, Upon Request, **additional rental and trucking fees apply**

AVID S6L Video Instruction: <http://www.avidblogs.com/venue-s6l-workflows-video-series/>

Signal Drive System Located at FOH

- (1) MEYER Galaxy 816, 8 IN/16 OUT SPEAKER MANAGEMENT V4.11, Analogue, AES, AVB Inputs
- (1) Meyer Callisto 616, 6 in/16 out speaker management V3.8
- (1) APB Dynasonics Mix Switch
- (1)12Ch 250FT Drive Line Snake
- (2) Fiber Optic 250FT Digital Snake

Stage Box Splitter: Ramtech 54ch ISO split /subsnake mults/ (6)12ch 75' sub snakes

System Analyzer

Meyer SIM3 dual FFT Analyzer/LectrasonicsTM400 wireless system, 4 SIM/DPA 4007 MICS

House Loudspeakers

(10) Meyer Panther High Power Linear Line array per side

- (8) Meyer Panther L Linear Line Array/side
- (2) Meyer Panther W Linear Line Array/ side)
 - (8) Meyer 2100-LFC, single 21" 4)voice coil Powered Subs w/RMS 4 Per side, Cardioid
 - (2) Meyer JM-1P powered center fill speakers 20 deg H x 60 deg V
 - (2) Meyer Ultra- X40 powered front fill speakers 110 deg H x 50 deg V
 - (2) Meyer UPM-1P powered delay speakers
 - (1) Meyer RMServer

Monitor Console Located Stage Left

AVID S6L-32D, E6-144 , digital console V7.1 (or current update) 1hdx, 2 AVB cards
AVID AAX, Plug in Bundles
AVID STAGE 64, 64 INPUT, 32 ANALOGUE OUTPUTS
Yamaha PM5D-RH V2.25

Monitor Speakers

- (8) MEYER MJF-210 (2 X 10 x 4 inch diaphragm compression driver) powered monitor
- (4) MEYER UM-1P (1x12 x 3 inch diaphragm compression driver) powered monitor
- (2) MEYER USM-1P (1 x 15 x 3 inch diaphragm compression driver) Extended range powered monitor
- (1)900-LFC sub powered drum fill

(2) Meyer MSL4/650-P sub side fills

(*) Shure PSM1000 personal monitor system upon request, **Additional rental fees apply**

Microphones

(6) Neumann KM84	(6) Shure KSM137	(5) EV 408	(2) Beyer M88
(2) Neumann KM140	(1) Shure Beta 52(1) EV RE27		(4) Shure SM58
(4) Neumann KM105	(6) Shure Beta 58	(1) Audix D6	(1) ROYER SF24 stereo active ribbon
(1) Neumann KMS150	(6) Shure SM57	(3) SHURE KSM8	(2) Royer R-122L active ribbon
(1) Neumann TLM170	(1) Shure Beta 91a	(2) Shure KSM 313 ribbon microphone	
(2) AKG C 460	(2) Shure Beta 87	(2) Shure KSM 32	
(2) AKG C 414	(4) Shure Beta 98amp	(2) Schertler Dyn-GP piano pickup	
(4) AKG C535	(4) Sennheiser 421	(1) Telefunken M82	
(1) DPA 3521 Piano Kit	(1) Telefunken M80	(4) DPA 4099	
(6) DPA 2011C	(5) DPA d:facto vl	(*) Schoeps MK4, V4U, CMXY, RC1200 active tubes upon request	
AXIENT Digital Wireless (2) AD-2/B58, (2) AD-1 beltacks			

(*)additional Shure AXIENT, Shure Axient Digital ADX/Beta 58/KSM9/DPA D-FACTO, AXT600 Spectrum Manager, Sennheiser 3732/SKN5200/KM105 wireless upon request, **Additional rental fees apply**

(14)D.I.'s , Radial, KT, BSS, Jensen, Countryman

(50) Mic Stands w/LO2B Lock-On adapters (20 K&M 210 Tall Boom, 20 K&M 259 short Boom, 10Atlas Tall Boom)

Isolated Sound Power Located Down Stage Left

150 AMP 3phase transformer isolated power/ 5 wire female camlock through stage left
Within 15 ft of monitor world.

(*) **Additional fees apply for special requests**

System Description

The House speaker system is a Left/Right Stereo Meyer Panther Linear Line Array, (8) Panther L, (2) Panther W per side, flown with the top box 21ft from the stage deck. The stage deck is 27 inches above ground level. The Left and Right system rig points are 48ft apart. The Panther Line Array is divided into 3 zones which cover the venue's 250ft throw and 36ft rise. In addition, there are zones covering front fill using Meyer Ultra-X40 wide coverage and Meyer JM-1P narrow coverage speakers, out fill using Meyer CQ-2, and two delay zones using Meyer UPM-1P speakers at 150ft and 200ft. The Meyer 1100-LFC subs, (3) per side, are arranged to provide a Gradient Cardioid polar pattern. The system crossover is at 80Hz. The system delay is 10ms, and subs, fill, and delay zones are time aligned with the Panther Line Array. The system has been tuned and time aligned using a Meyer SIM3 dual FFT analyzer in combination with a Meyer Galaxy 816 processor. The output SPL of the System at mix position (90ft) using Pink Noise predicted by Meyer Mapp 3D is:

130.9 Max Linear Peak SPL

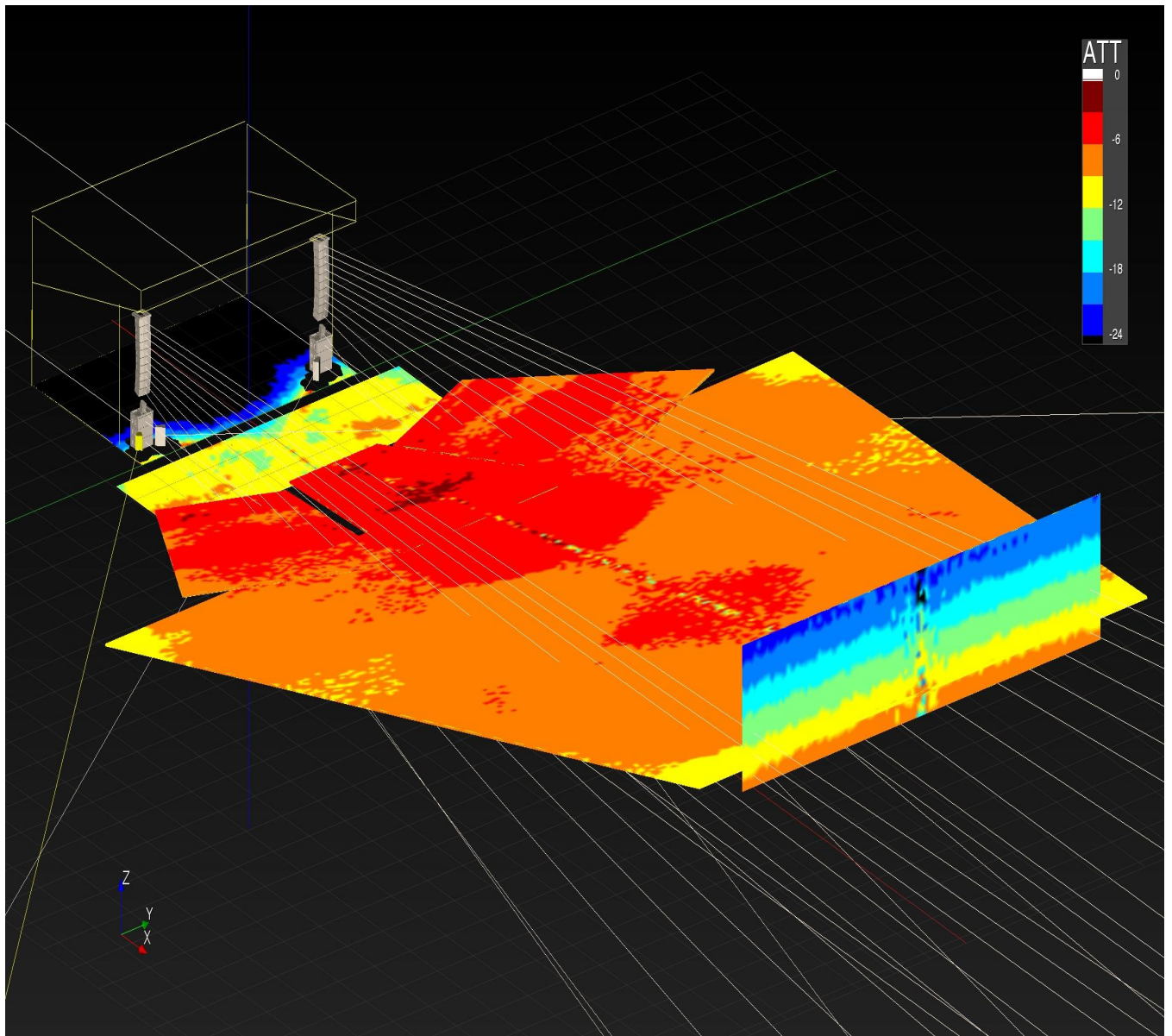
126.3 dB(Z) Linear Peak SPL

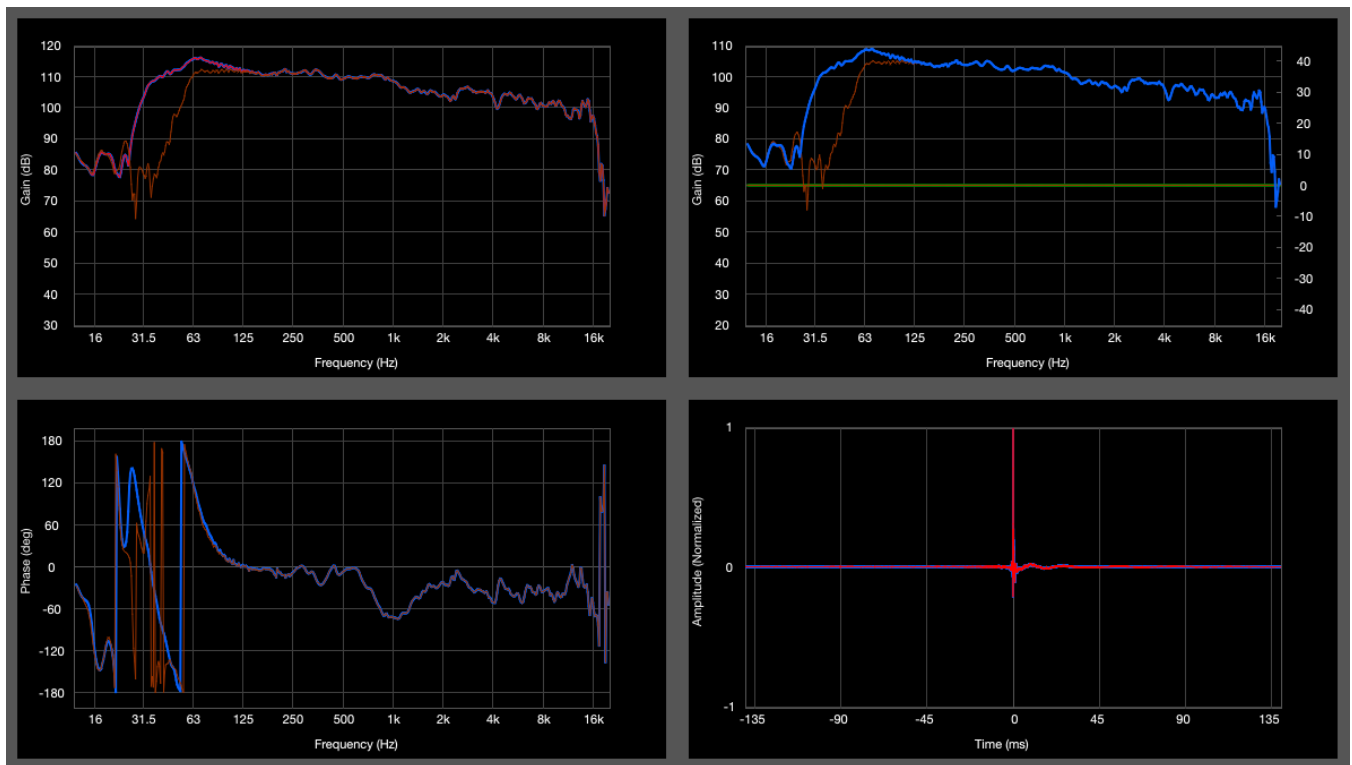
113.8 dB(Lin) Average SPL

113.1 dB(C) Average SPL

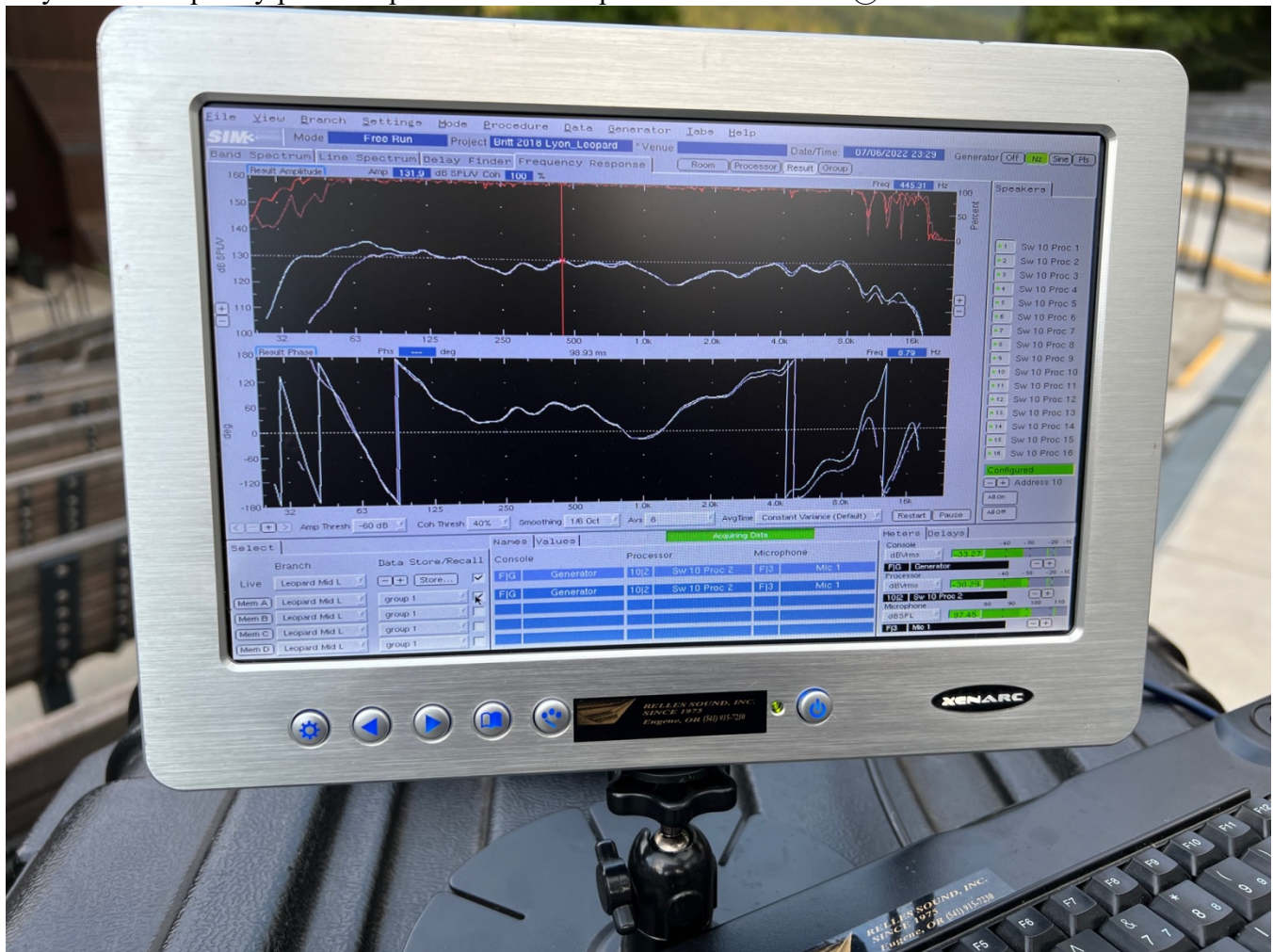
108.2 dB(A) Average SPL

Meyer Panther/1100-LFC/ X40/JM-1P/,Attn @4KHz, 3dB/color Meyer Mapp3D prediction

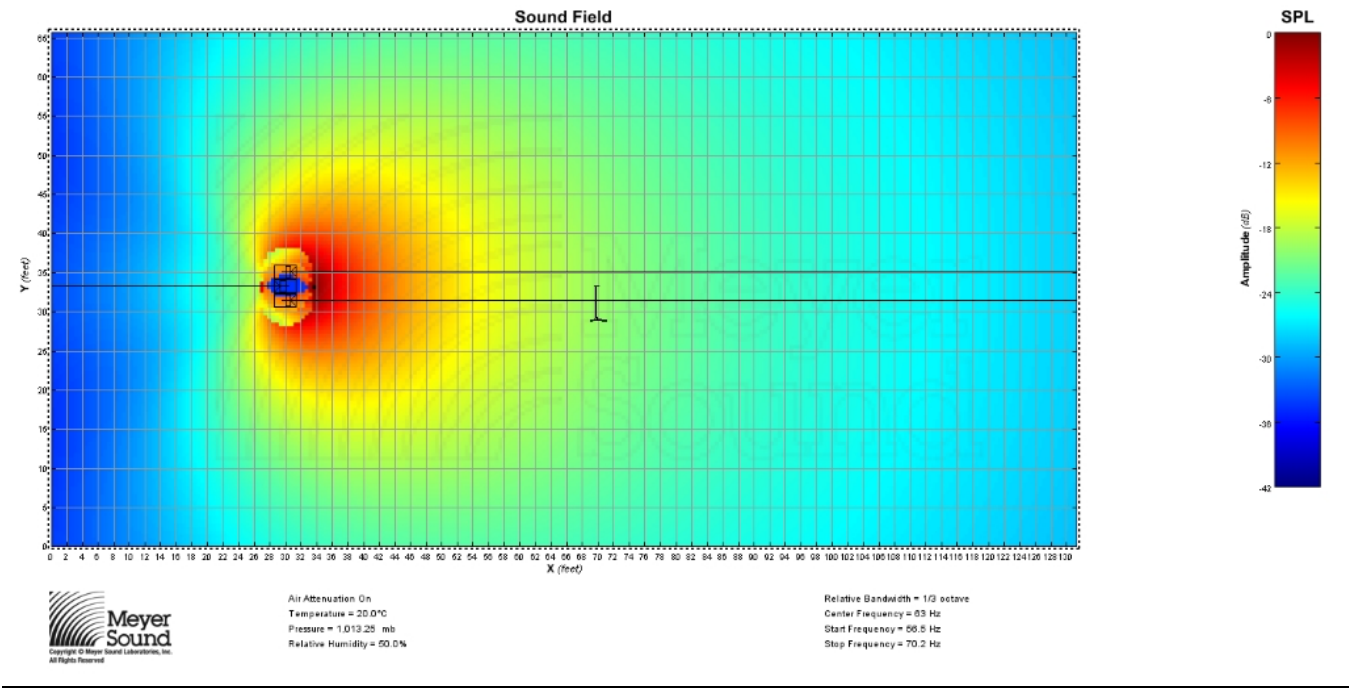




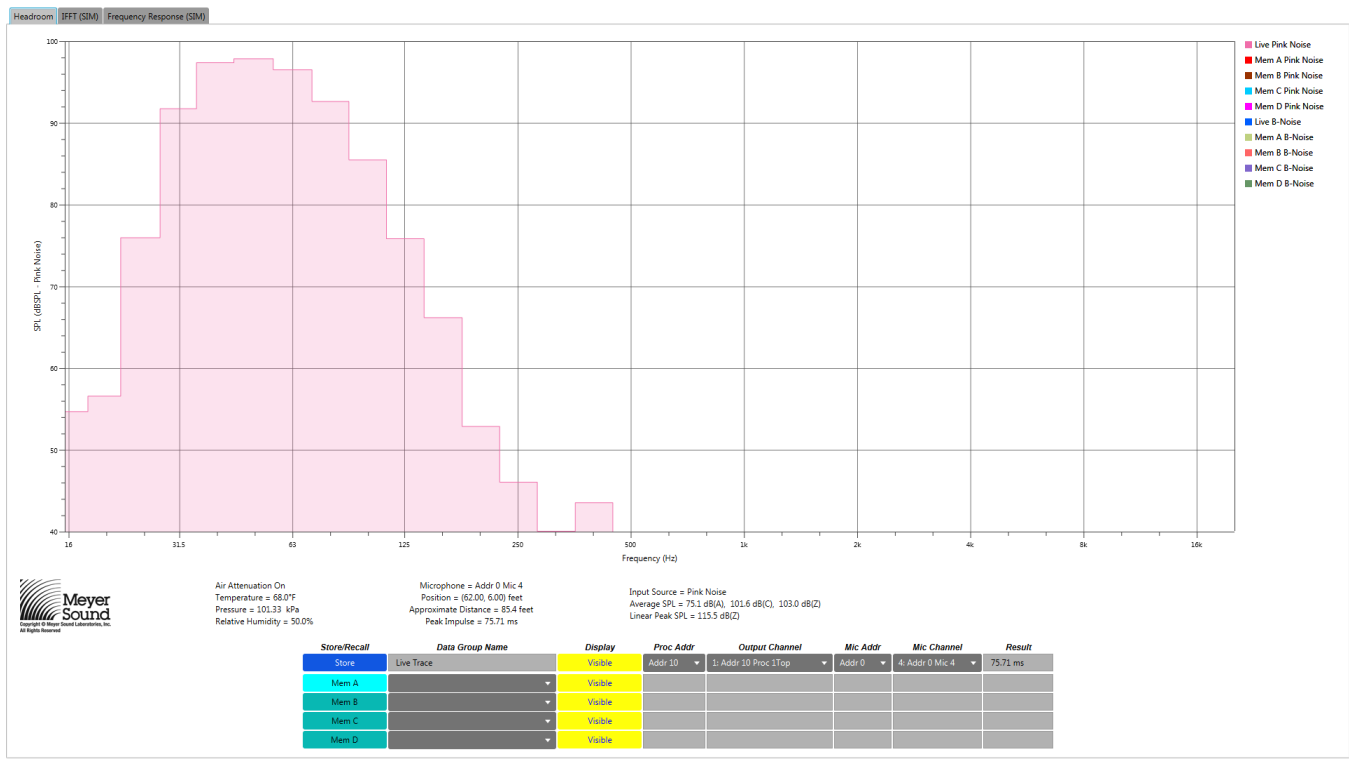
Meyer SIM frequency/phase response of Panther plus 1100-LFC subs @FOH



Meyer 1100-LFC Cardioid Prediction @63Hz



Meyer 1100-LFC VIRTUAL SIM @40ft



PETER BRITT CONDITIONAL USE PERMIT SOUND ORDINANCE

The Peter Britt Venue has a 92dbA(Leq)/hour SPL LIMIT measured over (3) 1 hour periods starting at 7:30PM-8:30PM, 8:30PM-9:30PM, 9:30PM-10:30PM hard curfew. The measurement system is manufactured by Grozier and has monitors at FOH mix and Production Office that indicate 1sec average, 1 minute average, and cumulative average with green, yellow, and red warning lights triggered by the 1 sec. averages. The measurement mic is located in the follow spot tower above mix position isolated from the audience. A printed log is generated at the end of each performance.

