



PETER BRITT FESTIVALS AUDIO SPECIFICATION 2024

AUDIO CONTRACTOR – GEORGE RELLES SOUND, INC. EST 1975

CONTACT: GEORGE RELLES
 PH/FX – 541.686.9325
MOBILE –541.915.7230
 E-MAIL –GRELLES@MSN.COM

FOH CONSOLE:

AVID S6L-32D, E6-144 , 1)HDX, 2)AVB CARDS V7.2.1 (OR CURRENT UPDATE),

WAVES WSG-HD SOUNDGRID OPTION, WAVES EXTREME SERVER

AVID AAX, ELEVEN, MCDSP, OXFORD LIVE, WAVES MERCURY, SSL4000, ABBEY ROADS, SOOTHE, PHOENIX, EMPIRICAL LABS

AROUSER PLUG IN BUNDLES,

MADI -192 OPTION CARD, PRO TOOLS STUDIO, MACBOOK PRO M1, 16GB RAM

LOCAL RACK: AVID E6-144, LEXICON PCM96 SURROUND, EVENTIDE ECLIPSE, WAVES EXTREME SERVER , NEVE MBT, TASCAM SS CDR200, APC UPS

AVID STAGE 64 FIBER OPTIC/ 64 MIC IN /8 AES out/ UPS

(*) AVALON VT 737, SUMMIT DCL200, GML 2020 UPON REQUEST

(*) SOLID STATE LOGIC LIVE. L-550, UPON REQUEST, **ADDITIONAL RENTAL AND TRUCKING FEES APPLY**

(*) DIGICO QUANTUM 225, UPON REQUEST, **ADDITIONAL RENTAL AND TRUCKING FEES APPLY**

SIGNAL DRIVE SYSTEM LOCATED AT FOH

(1) MEYER GALAXY 816, 8 IN/16 OUT SPEAKER MANAGEMENT V4.13.0, ANALOGUE, AES, AVB INPUTS

(1) MEYER CALLISTO 616, 6 IN/16 OUT SPEAKER MANAGEMENT V3.12.1

(1) APB DYNASONICS MIX SWITCH

(1)12CH 250FT DRIVE LINE SNAKE

(2) FIBER OPTIC 250FT DIGITAL SNAKE

STAGE BOX SPLITTER: RAMTECH 54CH ISO SPLIT /SUBSNAKE MULTS/ (6)12CH 75' SUB SNAKES

SYSTEM ANALYZER

MEYER SIM3 DUAL FFT ANALYZER/LECTRASONICSTM400 WIRELESS SYSTEM, 4 SIM/DPA 4007 MICS

HOUSE LOUDSPEAKERS

(10) MEYER PANTHER HIGH POWER LINEAR LINE ARRAY PER SIDE

(8) MEYER PANTHER L LINEAR LINE ARRAY/SIDE

(2) MEYER PANTHER W LINEAR LINE ARRAY/ SIDE)

(8) MEYER 2100-LFC, SINGLE 21" 4)VOICE COILS, POWERED SUBS 4 PER SIDE, LINE FIRE CARDIOID

(2) MEYER JM-1P POWERED CENTER FILL SPEAKERS 20 DEG H x 60 DEG V

(2) MEYER ULTRA- X40 POWERED FRONT FILL SPEAKERS 110 DEG H x 50 DEG V

(2) MEYER UPM-1P POWERED DELAY SPEAKERS

(1) MEYER RMSERVER, NEBRA

MONITOR CONSOLE LOCATED STAGE LEFT

AVID S6L-32D, E6-144 , V7.2.1 (OR CURRENT UPDATE) 1HDX, 2 AVB CARDS, WAVES WSG-HD, WAVES EXTREME SERVER

AVID AAX, WAVES MERCURY, ABBEY ROADES, SSL4000, SOOTHE, PLUG IN BUNDLES

AVID STAGE 64, 64 INPUT, 32 ANALOGUE OUTPUTS

YAMAHA PM5D-RH V2.25

MONITOR SPEAKERS

(8) MEYER MJF-210 (2 X 10 X 4 INCH DIAPHRAGM COMPRESSION DRIVER) POWERED MONITOR

(4) MEYER UM-1P (1x12 X 3 INCH DIAPHRAGM COMPRESSION DRIVER) POWERED MONITOR

(2) MEYER USM-1P (1 X 15 X 3 INCH DIAPHRAGM COMPRESSION DRIVER) EXTENDED RANGE POWERED MONITOR

(1)900-LFC SUB POWERED DRUM FILL

(2) MEYER MSL4/650-P SUB SIDE FILLS

(*) SHURE PSM1000 PERSONAL MONITOR SYSTEM UPON REQUEST, **ADDITIONAL RENTAL FEES APPLY**

MICROPHONES

| | | | |
|--|----------------------|--|-------------------------------------|
| (6) NEUMANN KM84 | (6) SHURE KSM137 | (5) EV 408 | (2) BEYER M88 |
| (2) NEUMANN KM140 | (1) SHURE BETA 52 | (1) EV RE27 | (4) SHURE SM58 |
| (4) NEUMANN KM105 | (6) SHURE BETA 58 | (1) AUDIX D6 | (1) ROYER SF24 STEREO ACTIVE RIBBON |
| (1) NEUMANN KMS150 | (6) SHURE SM57 | (3) SHURE KSM8 | (2) ROYER R-122L ACTIVE RIBBON |
| (1) NEUMANN TLM170 | (1) SHURE BETA 91A | (2) SHURE KSM 313 RIBBON MICROPHONE | |
| (2) AKG C 460 | (2) SHURE BETA 87 | (2) SHURE KSM 32 | |
| (2) AKG C 414 | (4) SHURE BETA 98AMP | (2) SCHERTLER DYN-GP PIANO PICKUP | |
| (4) AKG C535 | (4) SENNHEISER 421 | (1) TELEFUNKEN M82 | |
| (1) DPA 3521 PIANO KIT | (1) TELEFUNKEN M80 | (4) DPA 4099 | |
| (6) DPA 2011C | (5) DPA D:FACTO VL | (*) SCHOEPS MK4, V4U, CMXY, RC1200 ACTIVE TUBES UPON REQUEST | |
| AXIENT DIGITAL WIRELESS (2) AD-2/B58, (2) AD-1 BELTPACKS | | | |

(*)ADDITIONAL SHURE AXIENT, SHURE AXIENT DIGITAL ADX/BETA 58/KSM9/DPA D-FACTO, AXT600 SPECTRUM MANAGER, SENNHEISER 3732/SKN5200/KM105 WIRELESS UPON REQUEST, **ADDITIONAL RENTAL FEES APPLY**

(14)D.I.'s , RADIAL, KT, BSS, JENSEN, COUNTRYMAN

(50) MIC STANDS W/LO2B LOCK-ON ADAPTERS (20 K&M 210 TALL BOOM, 20 K&M 259 SHORT BOOM, 10ATLAS TALL BOOM)

ISOLATED SOUND POWER LOCATED DOWN STAGE LEFT

150 AMP 3PHASE TRANSFORMER ISOLATED POWER/ 5 WIRE FEMALE CAMLOCK THROUGH STAGE LEFT
WITHIN 15 FT OF MONITOR WORLD.

(*) **ADDITIONAL FEES APPLY FOR SPECIAL REQUESTS**

System Description

The House speaker system is a Left/Right Stereo Meyer Panther Linear Line Array, (8) Panther L, (2) Panther W per side, flown with the top box 21ft from the stage deck. The stage deck is 27 inches above ground level. The Left and Right system rig points are 48ft apart. The Panther Line Array is divided into 3 zones which cover the venue's 250ft throw and 36ft rise. In addition there are zones covering front fill using Meyer Ultra-X40 wide coverage and Meyer JM-1P narrow coverage speakers, and two delay zones using Meyer UPM-1P speakers at 150ft and 200ft. The Meyer 2100-LFC subs, (4) per side, are arranged to provide a Line Fire Cardioid polar pattern. The system crossover is at 80Hz. The system delay is 10ms, and subs, fill, and delay zones are time aligned with the Panther Line Array. The system has been tuned and time aligned using a Meyer SIM3 dual FFT analyzer in combination with a Meyer Galaxy 816 processor. The output SPL of the System at mix position (90ft) using Pink Noise predicted by Meyer Mapp 3D is:

127.1 dB(Z) Linear Peak SPL

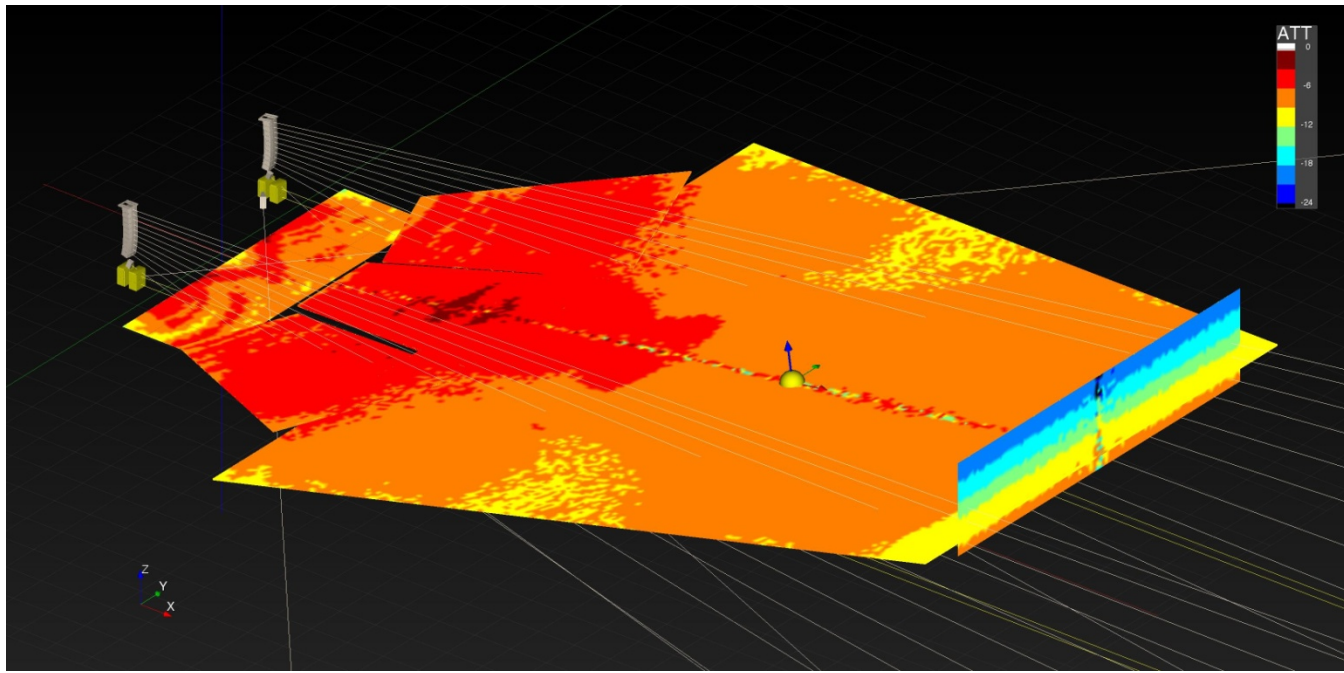
114.6 dB(Z) Average SPL

114.0= dB(C) Average SPL

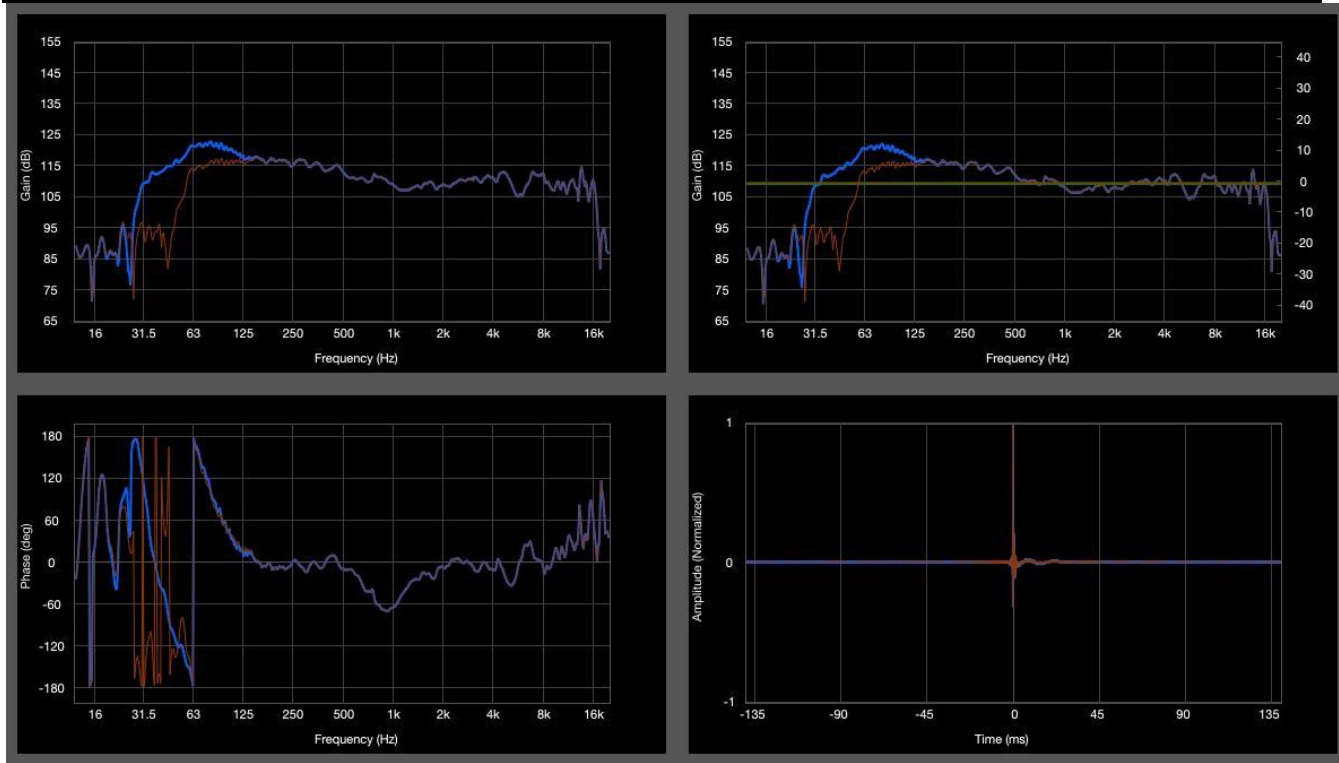
107.4 dB(A) Average SPL

In addition a ***Listen Technologies*** WiFi/RF Assistive Listening system is employed fed from a Galaxy 816 output.

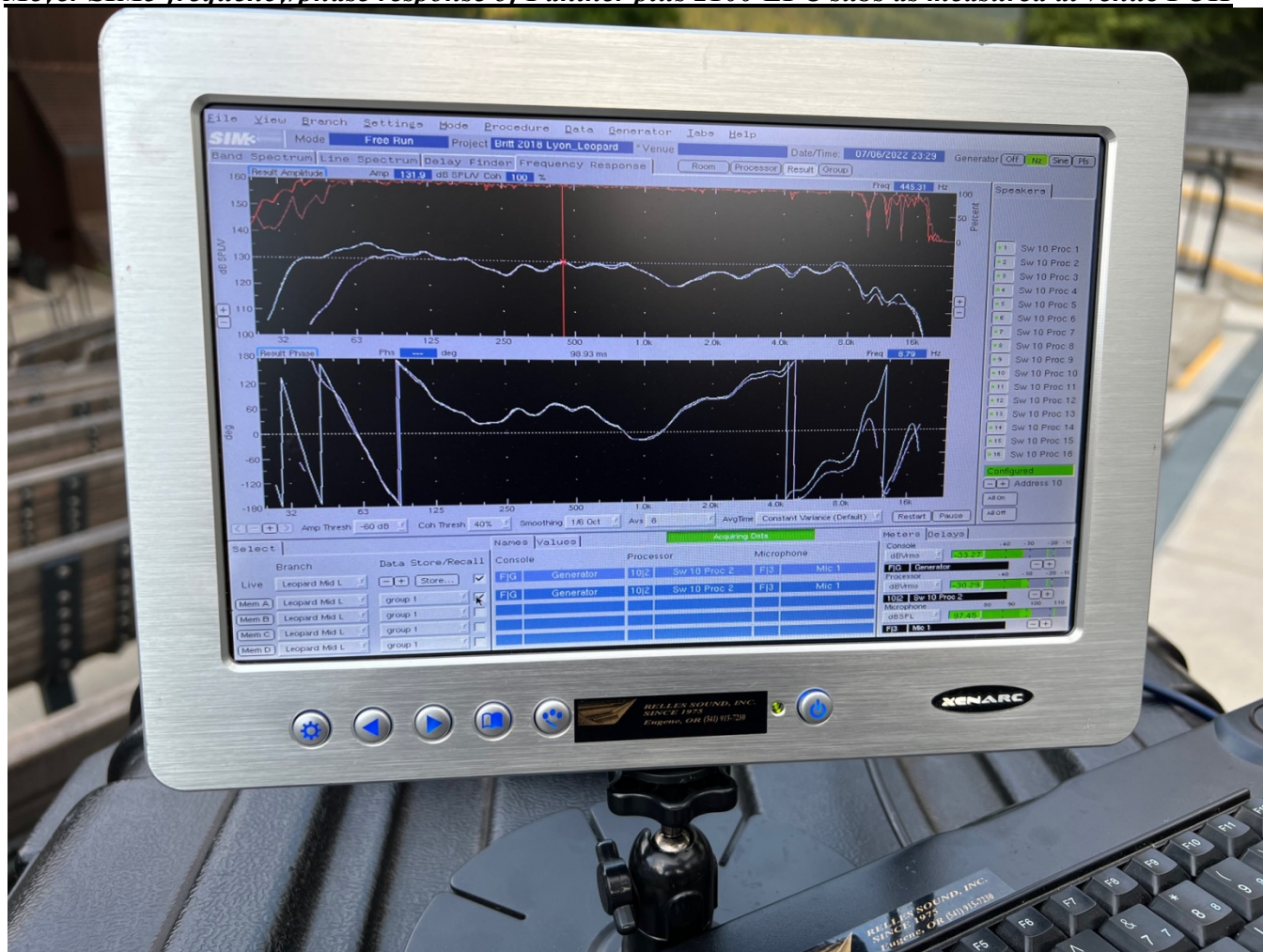
Panther/2100-LFC @4KHz attenuation 3db/color, Mapp 3D



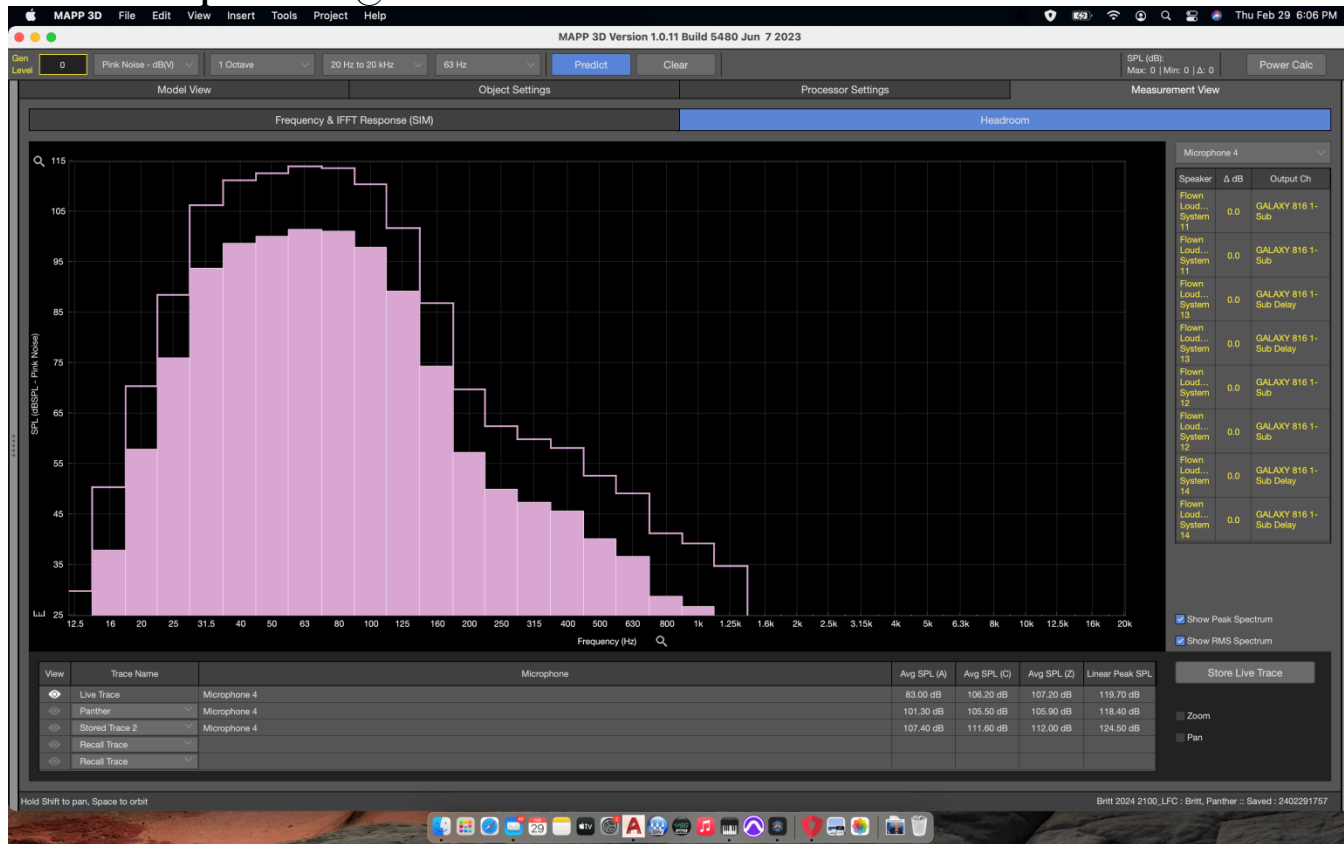
Panther/2100-LFC Frequency/Phase Response@90ft, Red Trace Panther, Blue Trace Panther/2100



Meyer SIM3 frequency/phase response of Panther plus 2100-LFC subs as measured at venue FOH



2100-LFC Response/SPL @90FT



Panther/2100-LFC SPL@90FT



PETER BRITT CONDITIONAL USE PERMITT SOUND ORDINANCE

The Peter Britt Venue has a 92dbA(Leq)/hour SPL LIMIT measured over (3) 1 hour periods starting at 7:30PM-8:30PM, 8:30PM-9:30PM, 9:30PM-10:30PM hard curfew. The measurement system is manufactured by Grozier and has monitors at FOH mix and Production Office that indicate 1sec average, 1 minute average, and cumulative average with green, yellow, and red warning lights triggered by the 1 sec. averages. The measurement mic is located in the follow spot tower above mix position isolated from the audience. A printed log is generated at the end of each performance.

